

Digital Set-up for Yaesu FTDX-3000D to Apple Macintosh computer.
05 December 2016 de K3URT

Hardware:

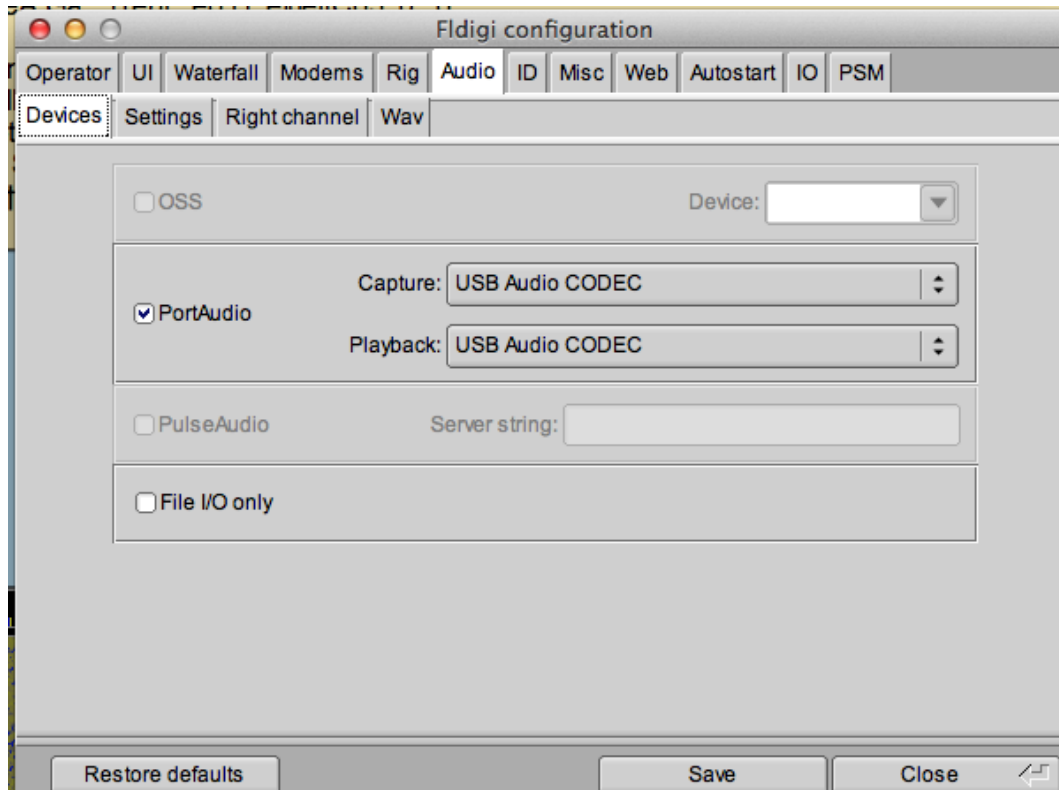
USB cable type B — from radio to computer only — no interfacing devices.

Radio settings:

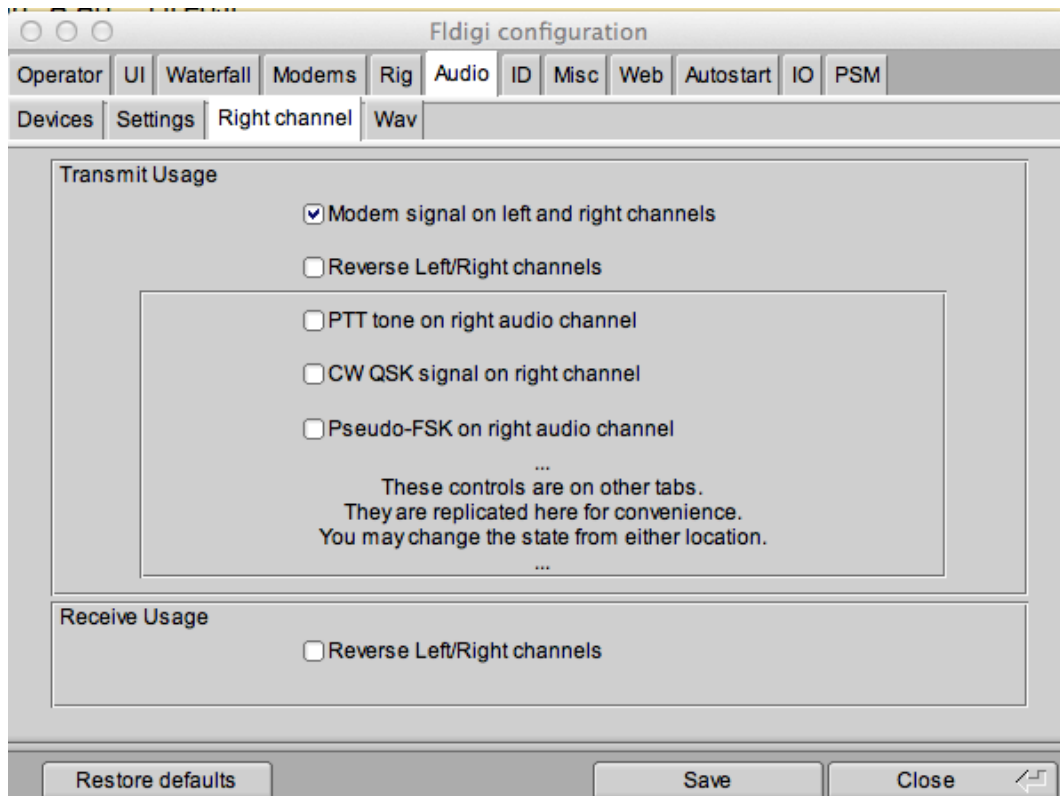
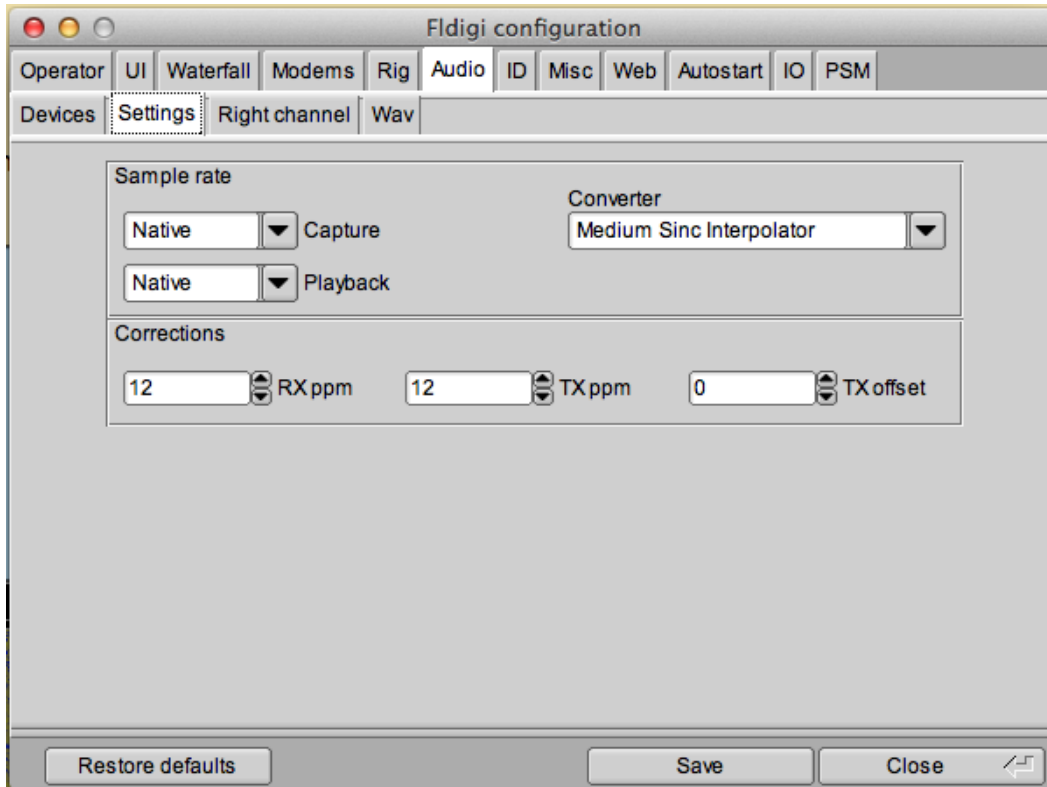
- 037 GENERAL CAT SELECT, set to USB
- 038 GENERAL CAT RATE, set to 19200bps
- 040 GENERAL CAT RTS, set to ENABLE
- 065 MODE CW PC KEYING, set to RTS
- 067 MODE DATA DATA MODE, set to PSK or OTHERS
- 069 MODE DATA OTHER DISP (SSB), set to 100Hz
- 070 MODE DATA DATA IN SELECT, set to USB
- 076 MODE DATA DATA MIC GAIN, set to 5
- 077 MODE DATA DATA OUT LEVEL, set to 20
- 078 MODE DATA DATA VOX GAIN, set to 40

Set radio in DATA USB mode

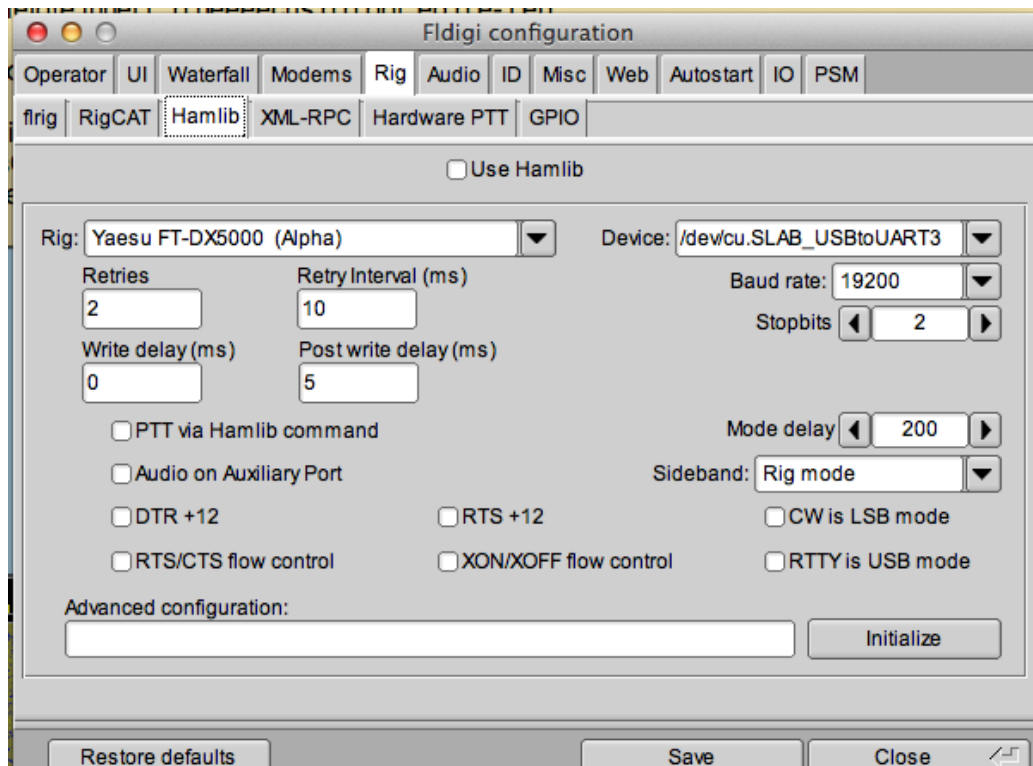
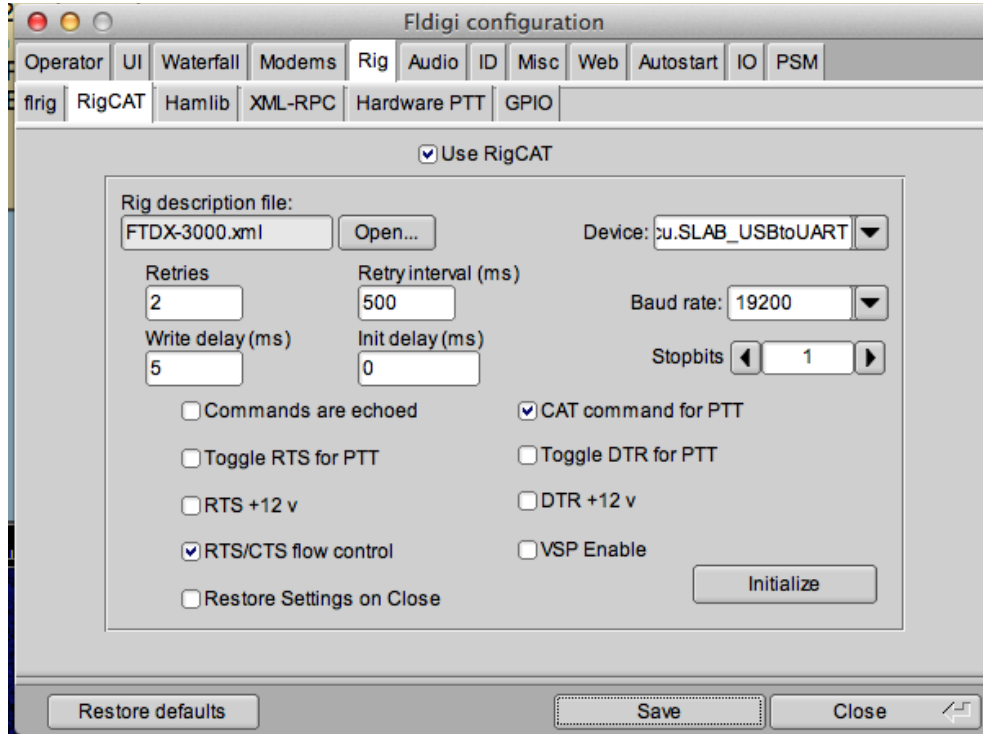
FLDIGI settings (under Configuration tab): FLDIGI version 3.23.16



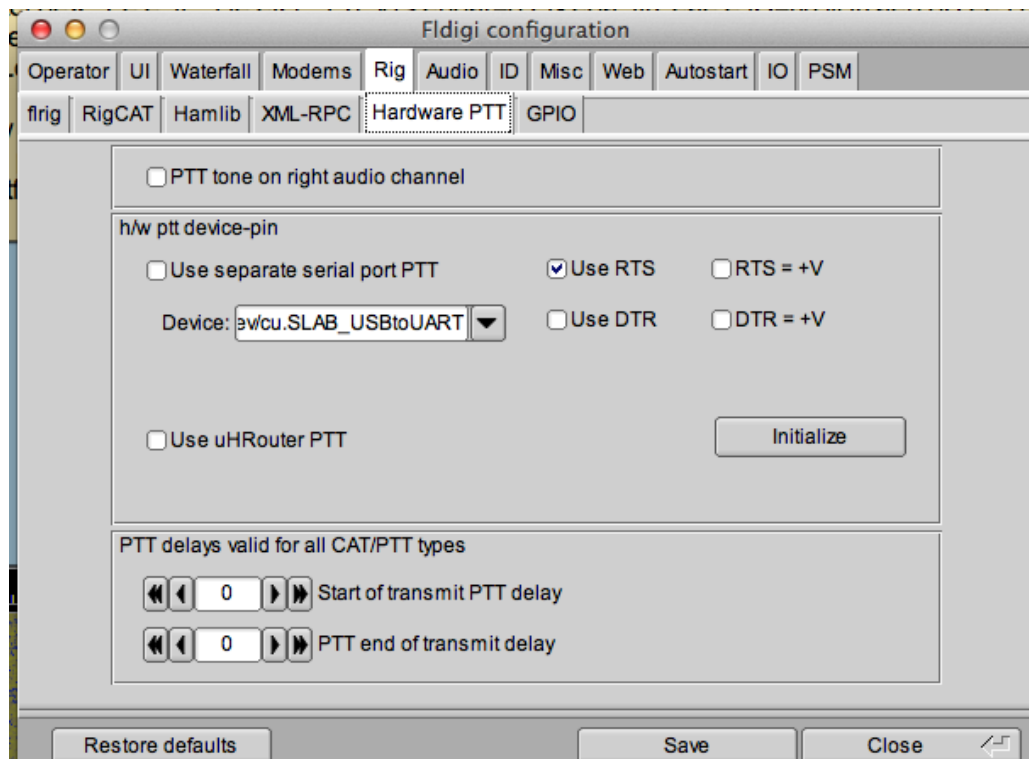
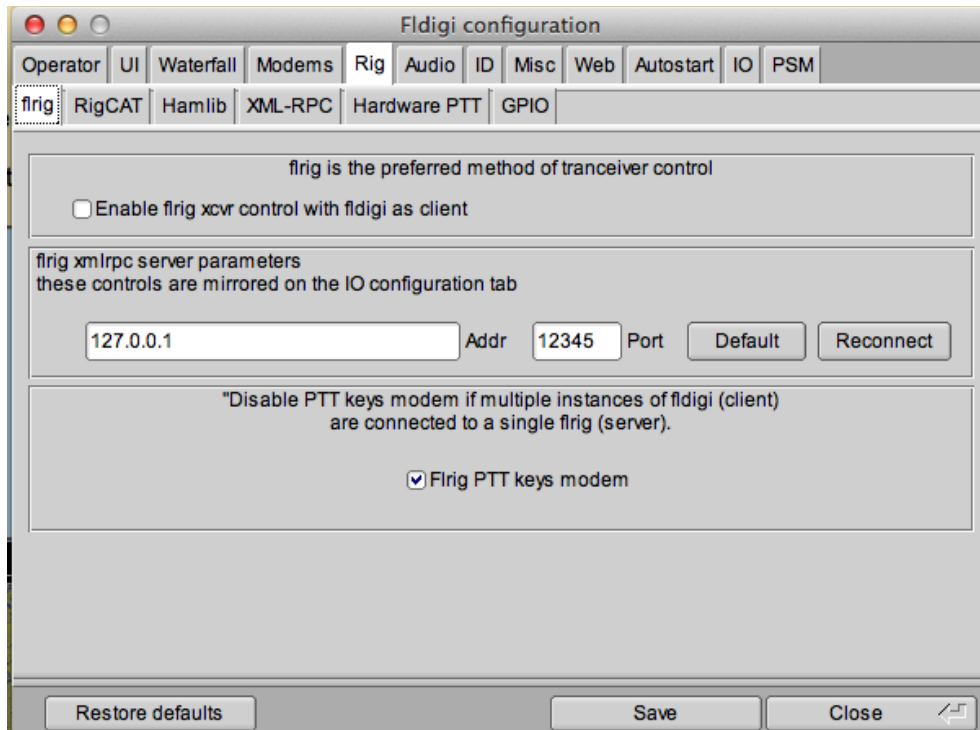
Digital Set-up for Yaesu FTDX-3000D to Apple Macintosh computer.
05 December 2016 de K3URT



Digital Set-up for Yaesu FTDX-3000D to Apple Macintosh computer.
05 December 2016 de K3URT

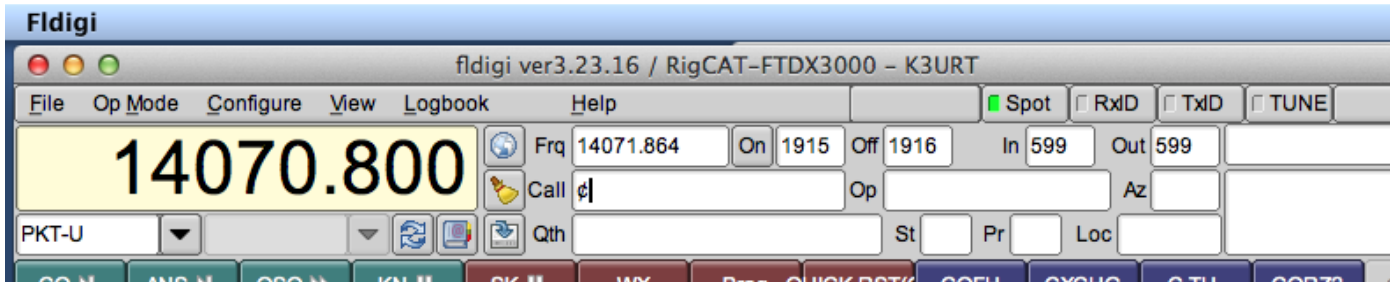


Digital Set-up for Yaesu FTDX-3000D to Apple Macintosh computer.
05 December 2016 de K3URT



**Digital Set-up for Yaesu FTDX-3000D to Apple Macintosh computer.
05 December 2016 de K3URT**

Set mode to PKT-U, then set your Op_Mode.



I leave everything else pretty much to default.

The USB drivers can be downloaded at:

<http://www.silabs.com/products/mcu/pages/usbtouartbridgevcdrivers.aspx#mac>

Credits:

<http://dcasler.com/2016/10/31/ftdx-3000-menu-settings/>

<http://w1hkj.com>

Subject to change.

Not responsible for these settings. Please read your manual and ask questions if in doubt.

Have fun!

De Curt, K3URT